

**Selma-Raspberry Falls Interconnect
Addendum 1**

February 11, 2011

PROJECT: Selma-Raspberry Falls Interconnect
Project ID Number 20100094

OWNER: Loudoun Water
44865 Loudoun Water Way
Ashburn, VA 20146
Bill Haase
571.291.7985

ENGINEER: Urban, Ltd.
4200-D Technology Court
Chantilly, VA 20151

The following changes, additions, clarifications, and drawings are hereby made part of the Contract Documents for the above referenced project and shall be taken into account in the preparation of all bids and the execution of all work. Bidders shall acknowledge receipt of this addendum in the appropriate space in Section 00410-2 - Bid Form.

The Bid opening date and time HAS BEEN EXTENDED in Section 00100-1, the Invitation to Bid date and time is now, Tuesday, February 15, 2011 at 3:00 p.m.

PART 1 – CLARIFICATIONS

1. The fairway restoration will be accomplished by the Raspberry Falls golf course maintenance staff. The Contractor shall backfill and compact the impacted area, and then coordinate with the golf course maintenance staff to begin the restoration. The Contractor shall be responsible for payment to the Raspberry Falls Golf and Hunt Club according to the attached schedule.

PART 2 – SPECIFICATIONS

Make the following additions, deletions, or other changes to the Contract Documents.

None

PART 3 – PLANS

1. Urban Sheet 5 of 6 – Install Type 1005 Ashcroft Commercial Pressure Gauge on upstream and downstream of pressure reducing valve. The pressure gauge shall be ½-inch NPT, 2-inch face, and a range of 0-150 psi. Gauge faces will be mounted facing hatch. Mounting location will be determined in the field.
2. Urban Sheet 5 of 6 - Contractor to install ½-inch NPT Zurn sample taps on the upstream and downstream of the pressure reducing valve. Mounting location will be determined in the field.
3. Urban Sheet 5 of 6 - Contractor to install raised stem and valve box on gate valve downstream of PRV.
4. Urban Sheet 5 of 6 – Contractor to install 6-inches of #57 drainage stone underneath PRV vault.
5. Urban Sheet 5 of 6 – Contractor shall paint all new exposed piping, fittings, and valves per “Table 9-1 Painting schedule, Table 9-2 Product Listing, and Table 9-3 Piping and Equipment Identification”

6. Urban Sheet 5 of 6 – The interior bottom of the PRV vault shall be grouted and sloped to ¼-inch per foot toward the 12” block-out. Block-out shall be filled with #57 drainage stone.

PART 4 –ATTACHMENTS

The following items are attached and considered part of this Addendum:

1. Raspberry Falls Golf Course Maintenance fairway repair cost estimate titled “Loudoun Waterline Install Repairs #3”
2. Table 9-1 Painting schedule, Table 9-2 Product Listing, and Table 9-3 Piping and Equipment Identification
3. Zurn Sample Tap
4. Ashcroft Pressure Gauge

END OF ADDENDUM

Loudoun Waterline Install Repairs #3

Item

100 Hole 3		
101	Topsoil	4,000.00
102	Seedbed Prep	1,300.00
103	Starter Fertilizer	360.00
104	Sod Installed	8,450.00
105	Grow-in	600.00
Total:		14,710.00

B. Paint hazardous areas and objects in accordance with OSHA regulations.

TABLE 9-1
PAINING SCHEDULE

<u>Surface</u>	<u>Application</u>	<u>Painting System & No. of Coats</u>	<u>Product Reference (Table 9.2)</u>	<u>Total Min Dry Film Thickness (Mils)</u>
<u>CONCRETE AND MASONRY</u>				
Interior masonry		1 coat sealer 2 coats acrylic epoxy	101 116	75-85 sq.ft./gal. 4-6/coat
<u>METALS</u>				
Interior and exterior nonsubmerged (gloss)	All new piping, fittings, and valves.	1 coat epoxy polyamide primer	104	4-6
		1 coat epoxy polyamide 1 coat aliphatic polyurethane	102 115	4-6 3-5
Steel doors, windows and door frames, steel stairs, monorails, structural steel, misc. metals (steel)	Misc Metals	1 coat epoxy polyamide 1 coat aliphatic polyurethane	102 115	5-8 3-4
Aluminum surfaces in contact with concrete	Bases in contact with concrete	2 coats coal tar	107	26
<u>OTHER</u>				
PVC piping		1 coat sealer 2 coats acrylic epoxy	101 116	75-85 sq.ft./gal. 4-6/coat

NOTE: All existing painted surfaces disturbed by Contractor operations shall be patched in a Manner satisfactory to the Engineer and painted to match existing adjacent areas.

TABLE 9-2
PRODUCT LISTING

Industrial Applications: Acceptable Manufacturers: KOP-COAT, Valspar, Tnemec, Porter, Ameron, or equal.

<u>REF.</u>	<u>SYSTEM</u>	<u>PURPOSE</u>	<u>PRODUCT</u>			
			<u>Inemec Series</u>	<u>Porter</u>	<u>AMERON</u>	<u>Sherwin-Williams</u>
101	Epoxy filler	Primer-sealer	130-6601	895 Unfill	AMERCOAT 147	Cement-Plex 375
102	Epoxy polyamide	Finish coat semi-gloss or gloss	66	MCR-43 (308 zinc-lock primer required for galvanized steel)	AMERCOAT 385	Macropoxy 646
103	Acrylic latex	Sealer	6	1600 Series	AMERGUARD 220	DTM Acrylic Primer/Finish
104	Epoxy Polyamide - metal	Primer	66	4300 Epoxy Primer	AMERCOAT 182	Macropoxy 646
106	Coal tar epoxy	Finish high-coat build	46-413	Tarset C-200	AMERCOAT 78HB	Hi-Mil Sher Tar Epoxy
107	Coal tar	Sealer	46-449	Tarmastic 100	AMERCOAT 78HB	Hi-Mil Sher Tar Epoxy
108	Alkyd-medium oil	Finish coat	2	1A 24	AMERCOAT 5401 HS	Industrial Enamel
109	Alkyd-long oil	Finish coat	23	1A 24	AMERCOAT 5401 HS	Industrial Enamel
110	Epoxy polyamide	Primer	66-1211	MCR 43 Epoxy Primer	AMERCOAT 71	Macropoxy 646
112	Epoxy polyamide	Sealer	66-1211	164 Sta-141	-	Macropoxy 920 Pre-frame
113	Silicone water repellent	Water repellent	50-60	151 Clear	-	-
114	Asphaltic semi-drying	Grease coating	-	-	-	-
115	Aliphatic Polyurethane	Finish coat	74 or 75	4610 Hythane	AMERCOAT 450 HS	Actron 218HS

Industrial Applications: Acceptable Manufacturers: KOP-COAT, Valspar, Tnemec, Porter, Ameron, or equal.

<u>REF.</u>	<u>SYSTEM</u>	<u>PURPOSE</u>	<u>Tnemec Series</u>	<u>Porter</u>	<u>AMERON</u>	<u>Sherwin-Williams</u>
116	Acrylic epoxy	Finish coat	113	9310 Dura-Glaze	AMERCOAT 335	Water-Based Catalyzed Epoxy
117	Epoxy block filler	Sealer	54-562	-	AMERLOCK 400 BF	Dura-Pox 258 for #117
118	Catalyzed epoxy	Finish coat	83	-	AMERCOAT 320	Macropoxy 646
119	High solids epoxy	Finish coat	104	MCR-65	AMERLOCK 400	Lank Clad HS
120*	Amine-cured epoxy	Corrosion resistance	104	-	-	-

Concrete and Masonry Block Application

201	Textured cement	Finish surface	Sonneborn Hydrocide Color Coat, Standard Drywall Products, Thoroseal, Tneme-Crete, or equal			
301	Glazed wall finish	Finish surface	Glazed cementitious wall covering by Glazed Cement Corp., Desco, Vitricon, or equal			

* Ceilgard 663 as manufactured by Master Builders Technologies is acceptable for Ref. 120.

TABLE 9-3
PIPING AND EQUIPMENT IDENTIFICATION

<u>SERVICE</u>	<u>LEGEND</u>	<u>BASE</u>	<u>BAND</u>
Potable Cold Water	Potable Water	Light Blue	
Vent	Vent	Light Blue	
Compressed Air Supply	Instrument Air	Dark Green	

- END OF SECTION -



WALL MOUNTED SINGLE SINK FAUCET

Z80401

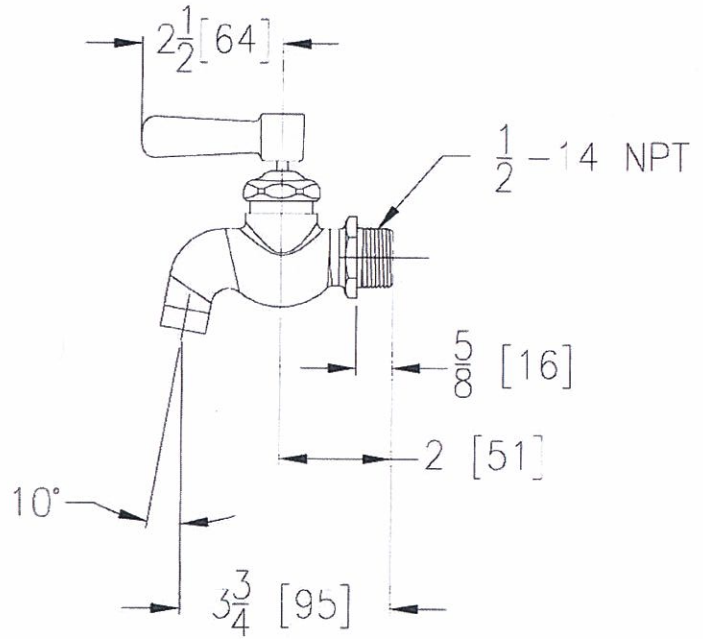
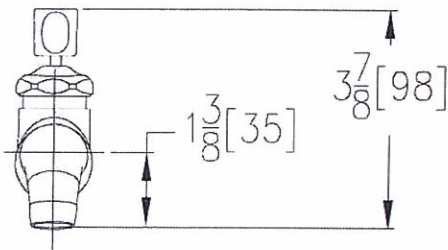
TAG _____

1" SAMPLE TAP



Engineering Specifications: Zurn AquaSpec® Z80401

Polished chrome plated wall mounted cast brass single sink faucet with a 1/2" NPT male inlet and plain outlet. Unit furnished with a 2 1/2" [64mm] vandal resistant color-coded metal lever handle.



Note: All dimensions are for reference only. Do not use for pre-plumbing

OPTIONAL ACCESSORIES

Suffix	Description
-HCT	Hot/Cold Text Indexes

ZURN INDUSTRIES, INC. ♦ COMMERCIAL BRASS OPERATION ♦ 2640 SOUTH WORK STREET ♦ FALCONER NY 14733
Phone: 1-716-665-1132 ♦ Fax: 1-716-665-1135 ♦ World Wide Web: www.zurn.com

In Canada: ZURN INDUSTRIES LIMITED ♦ 3544 Nashua Drive ♦ Mississauga, Ontario L4V1L2 ♦ Phone: 905/405-8272 Fax: 905/405-1292

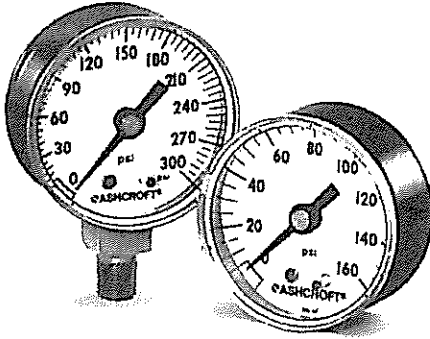
AquaSpec® is a registered trademark of Zurn Industries, Inc.
©2006 Zurn Industries, Inc.

Rev. F
Dwg. No. 62114

Date: 8/1/06

C.N. No. 104769
Product No. Z80401

Type 1005 Commercial Gauge



FEATURES

- Case material is black-painted steel
- These gauges have a heat-resistant push-in polycarbonate window
- Dial faces match other Ashcroft commercial gauges for easy readability
- Patented PowerFlex™ movement with polyester segment
- True Zero™ indication, a unique safety feature

Ashcroft Type 1005 pressure gauges share the uncompromising reputation for quality and product integrity that is inherent in all Ashcroft instruments. The core of the Type 1005 gauge is the patented PowerFlex™ movement. This movement has been thoroughly tested and proven to be more resistant to shock, vibration, and pulsation than conventional movements, thus assuring a more accurate, dependable, long-lasting gauge.

The essence of Ashcroft Type 1005 gauges is attractive styling, a technically superior design, durable construction, economy, and the excellent reputation of Ashcroft gauges for delivery and service.

True Zero™ indication, a unique safety feature standard on these gauges, is the accurate indication of zero pressure being applied to the gauge. In addition to the increased safety benefits, this means reduced inspection and manufacturing costs for you and your customer.

COMMONLY USED ON

Compressors, filter regulators, fluid power equipment, medical equipment, pool and spa filters, automotive diagnostic equipment, beverage dispensing equipment, industrial machinery, a variety of other applications

PRODUCT SPECIFICATIONS

Ashcroft Model No.:	1005
Sizes:	1½", 2", 2½", 3½"
Case:	Black painted steel
Window:	Polycarbonate
Dial:	Black figures on white background, aluminum
Pointer:	Black, aluminum
Bourdon Tube:	C-shape bronze (2"–3½", vacuum–600 psi and compound; 1½", vacuum–1000 psi) Helical bronze (2"–3½", 1000–6000 psi)
Movement:	PowerFlex™ with polyester segment
Socket:	Brass
Restrictor:	.013" orifice throttle plug in gauges 1000 psi and above.
Connections:	¼ and ½ NPT, lower and back (1½" not available in ¼ NPT)
Ranges:	1½" Vac-1000 psi only 2", 2½" Vac-6000 psi and compound 3½" Vac-6000 psi and compound
Accuracy:	ASME B40.100, Grade B, ±3-2-3%
Operating Temperature:	-40°F to 150°F, -40°C to 65°C

OPTIONAL FEATURES

Case:	Case color (other than black) Vent hole
Pointer:	Adjustable, Min/max assembly
Movement:	FlutterGuard™
Socket:	Non-standard length or thread Throttle plugs – 0.007", 0.013", 0.020", 0.063" Nickel plated . Teflon taped Top or side connection
Dials:	Customized Non-standard ranges Receiver ranges - 0/100 linear. 0/100 percent, 0/10 sq, root
Others:	UL 404 and UL 252A listing for compressed gas service Friction fit ring with glass window Bulk Packaging

HOW TO ORDER (Typical example)

Dial Size: 2"	20	W	1005	H	02L	XAP	100#
Movement: Patented PowerFlex™							
Case Type Number: 1005							
Socket Material: Brass							
Connection Size/Location: ½ NPT Lower							
Option: Adjustable Pointer							
Range: 100 psi							