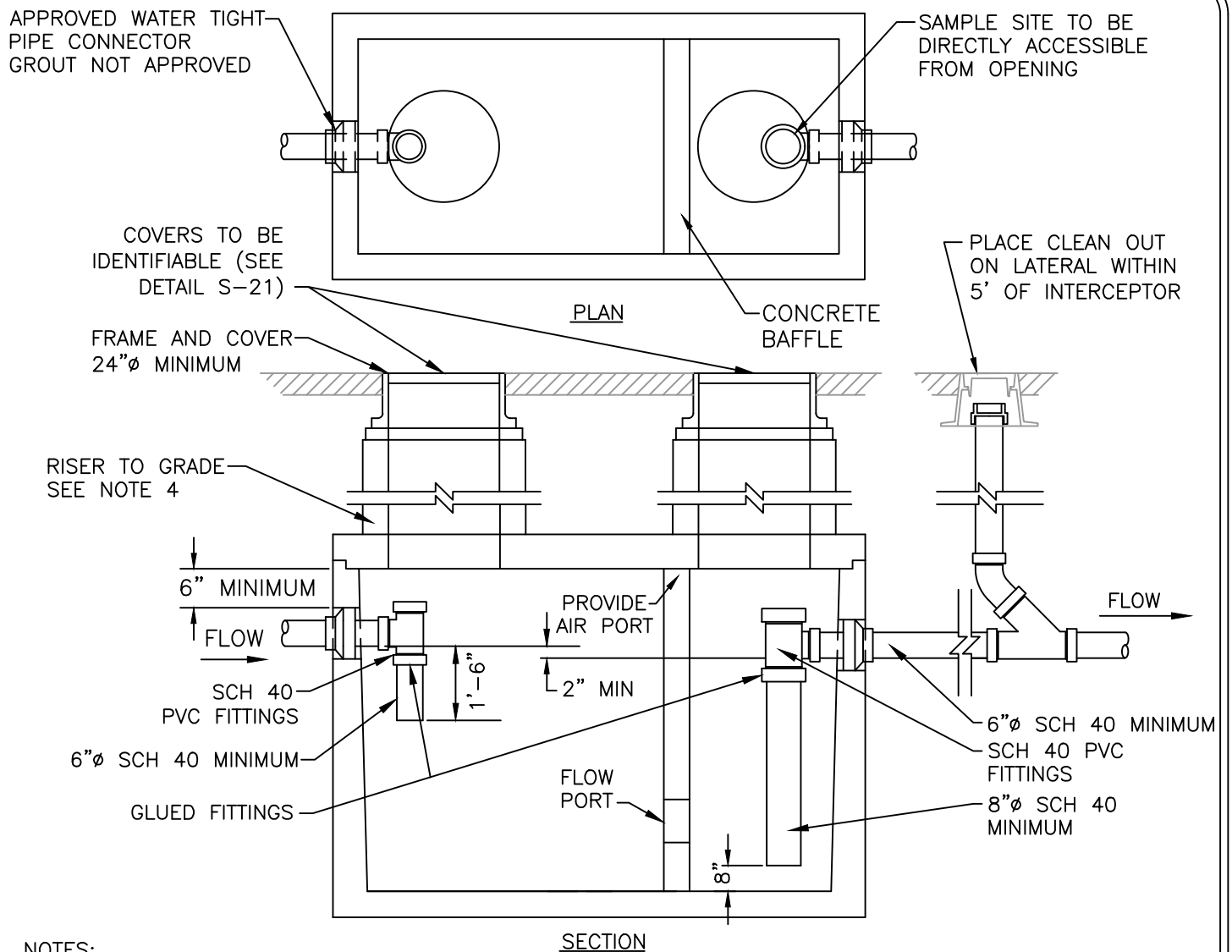


LOUDOUN WATER



NOTES:

1. MATERIALS SUBMITTAL FOR EACH DEVICE MUST BE APPROVED BY LOUDOUN WATER; PRIOR TO FABRICATION AND INSTALLATION.
2. EACH DEVICE MUST BE SIZED IN ACCORDANCE WITH CHAPTER 5 OF LOUDOUN WATER'S ENGINEERING MANUAL AND DESIGNED TO MEET THE REQUIREMENTS CITED IN THE APPROVED MATERIALS LIST.
3. INTERCEPTORS MAY BE MADE OF CONCRETE, FIBERGLASS REINFORCED PLASTIC, OR OTHERWISE APPROVED.
4. FOR DEVICES WITH MORE THAN 4' OF COVER, PROVIDE MINIMUM 3'Ø ACCESS SHAFTS, OF WATERTIGHT CONSTRUCTION, WITH INTERLOCKING JOINTS.
5. EXTERIOR OF CONCRETE INTERCEPTOR SHALL BE COATED WITH BITUMASTIC SEALER.
6. FOR OIL/WATER SEPARATORS, COALESCING MEDIA SHALL BE PROVIDED.
7. GREASE INTERCEPTOR DEPICTED – INTERNAL COMPONENTS MAY VARY FOR OIL/WATER/SAND/GRIT SEPARATORS.

OCT
2024

INTERCEPTOR/SEPARATOR

PT-1